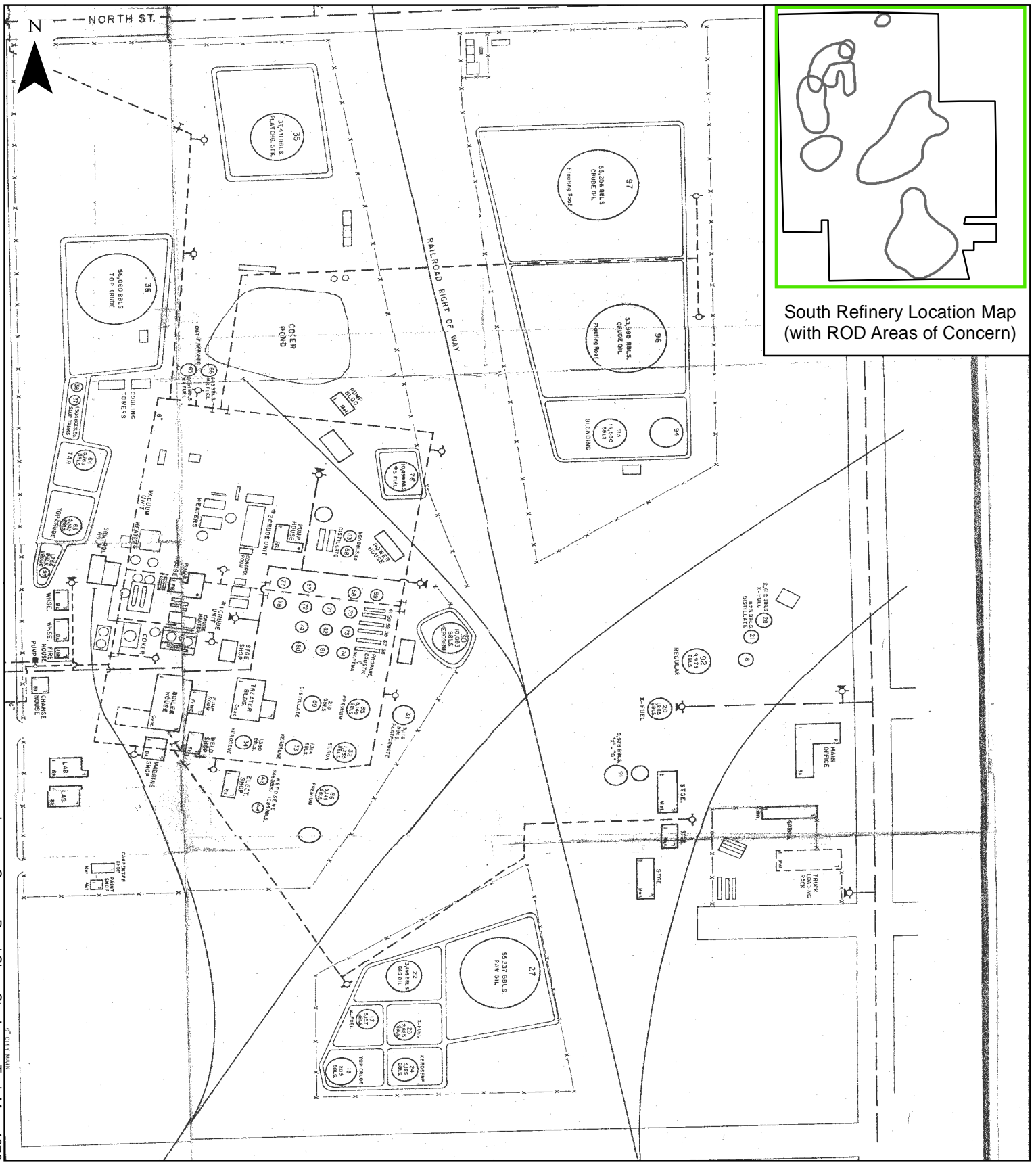


South Refinery at Time of Sale to Midland

FIGURE

1

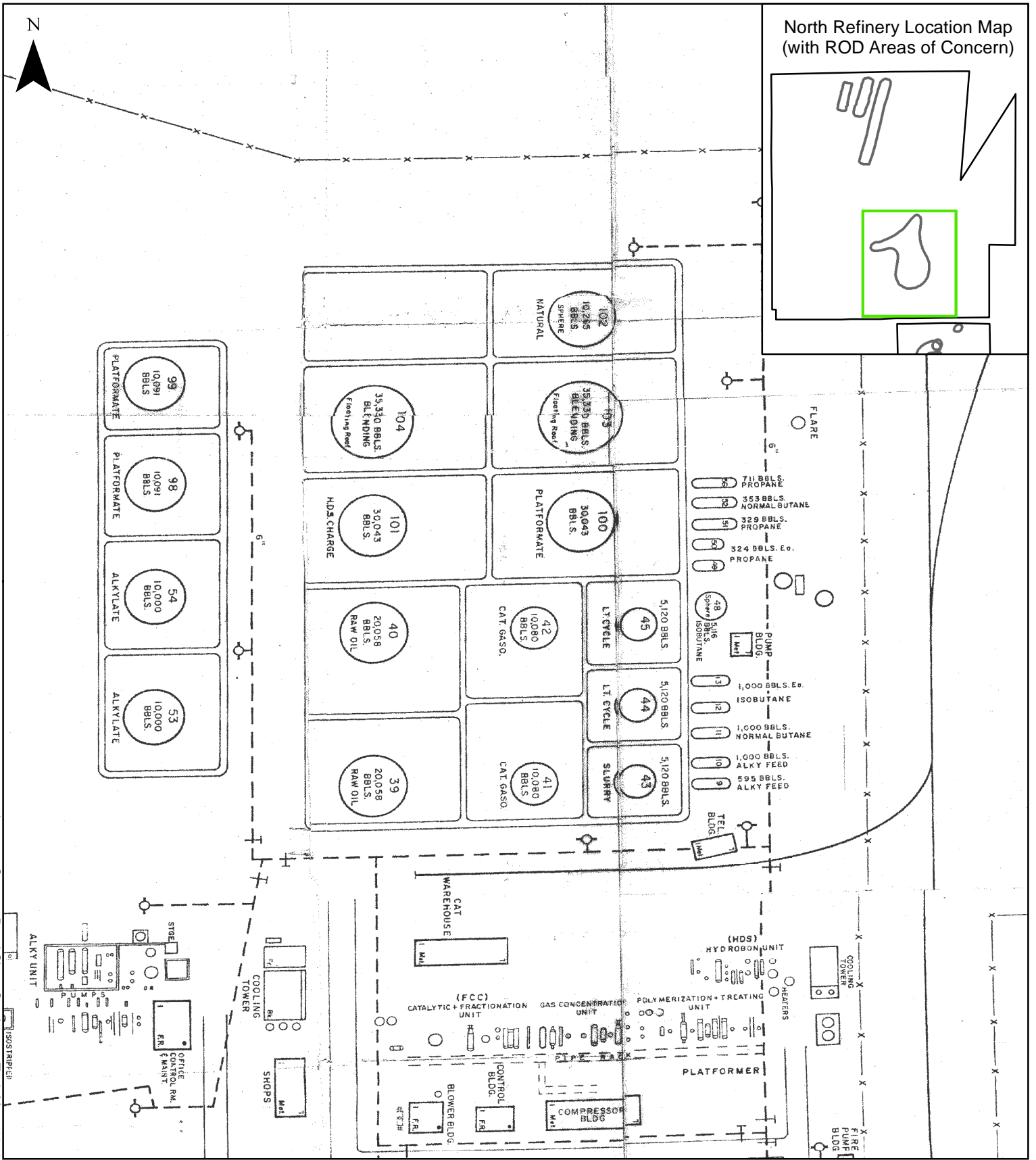


Sanborn Map: 1976

0 400 Feet

South Refinery at Time of Sale to Hudson

FIGURE
2A

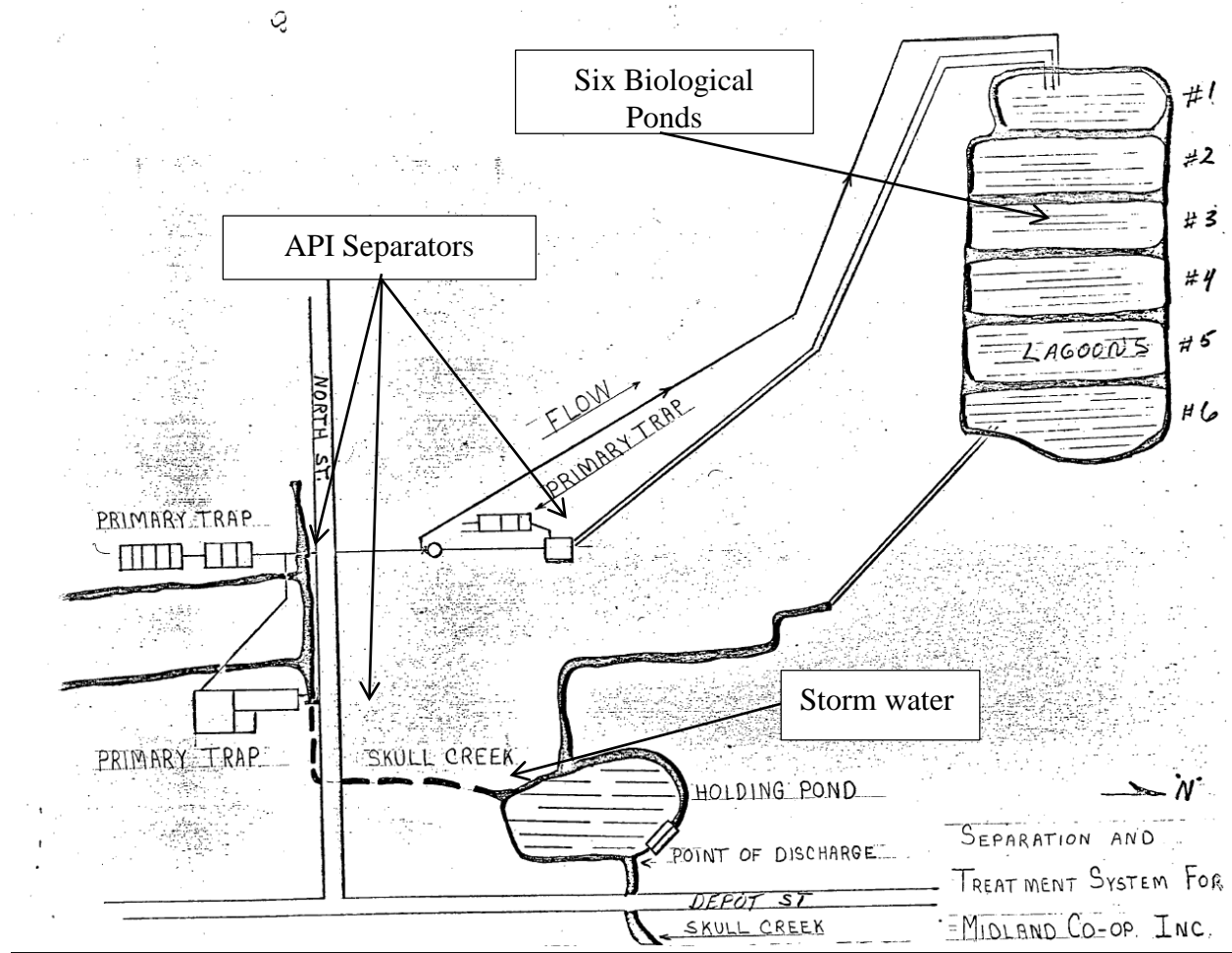


Sanborn Map: 1976

0 200 Feet

North Refinery at Time of Sale to Hudson

FIGURE 2B



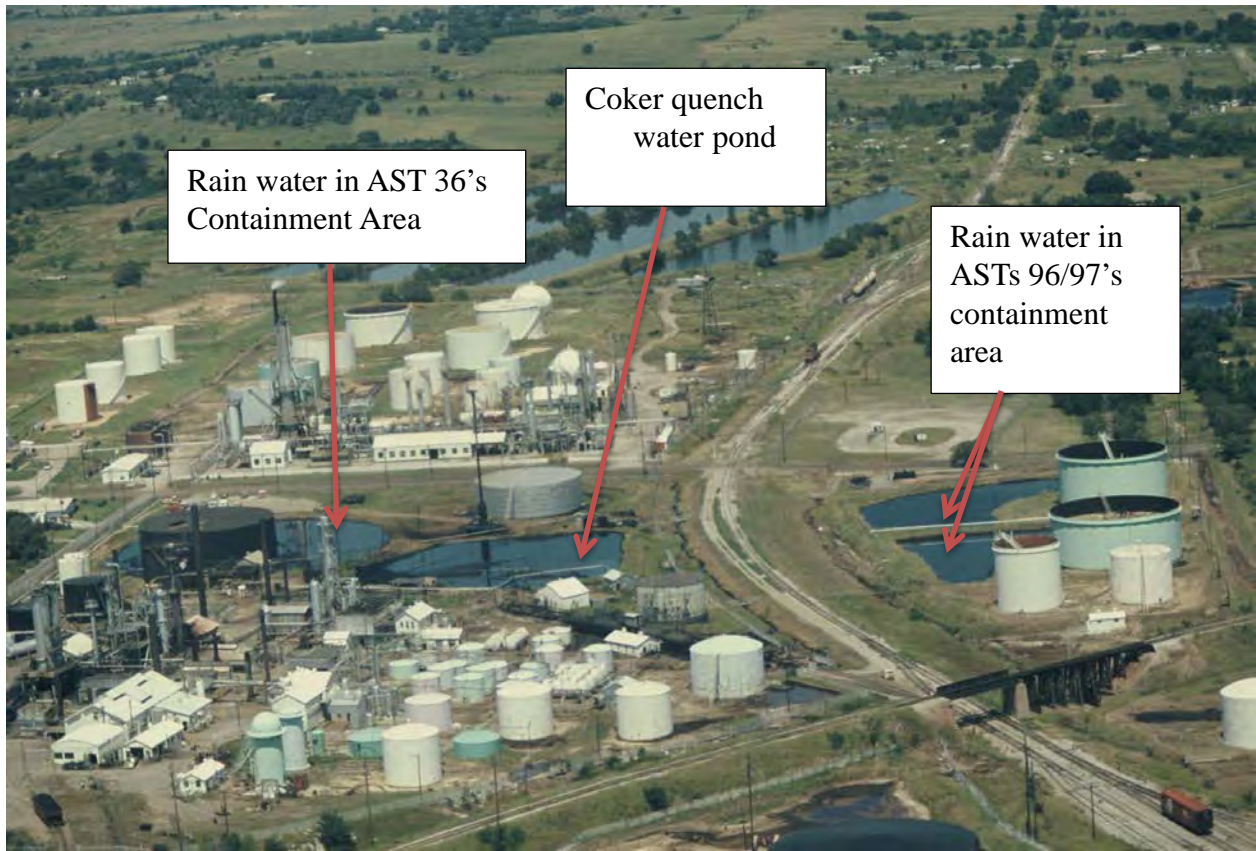
Midland's Process and Storm Water Treatment System

FIGURE
3



Aerial Photograph North Refinery (Late 1960s)

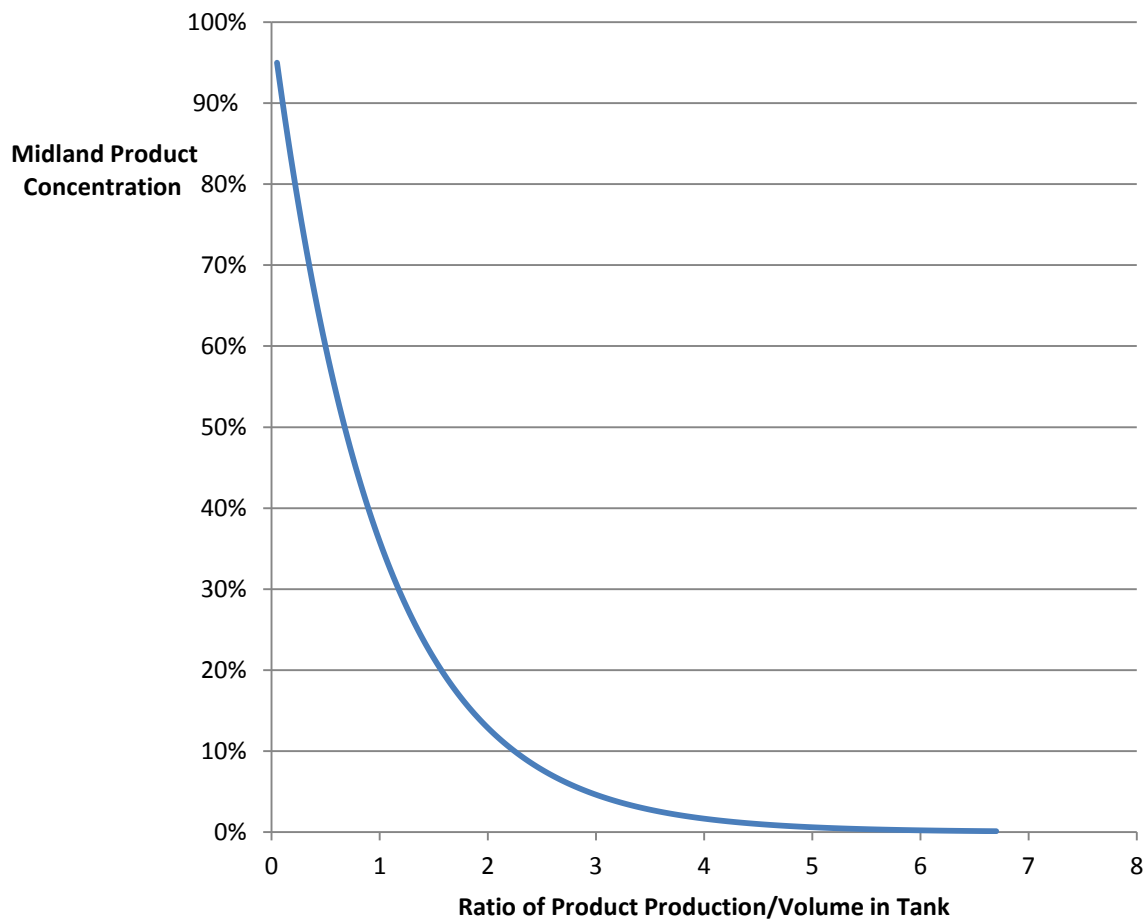
FIGURE
4



South Refinery Photograph, EPAFOI0104163

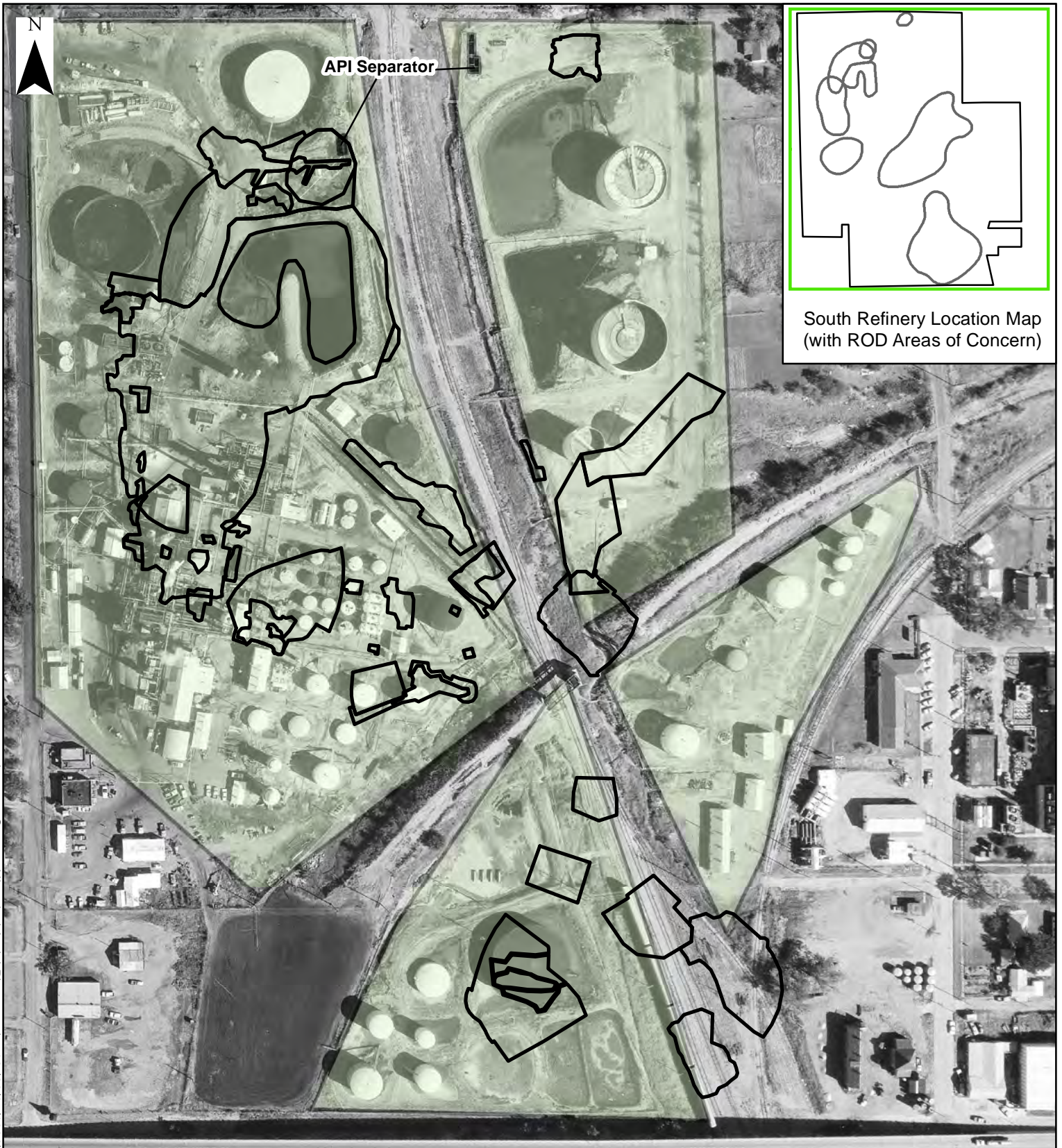
Aerial Photograph South Refinery (Early 1970s)

FIGURE
5



Midland Product Remaining In Tank

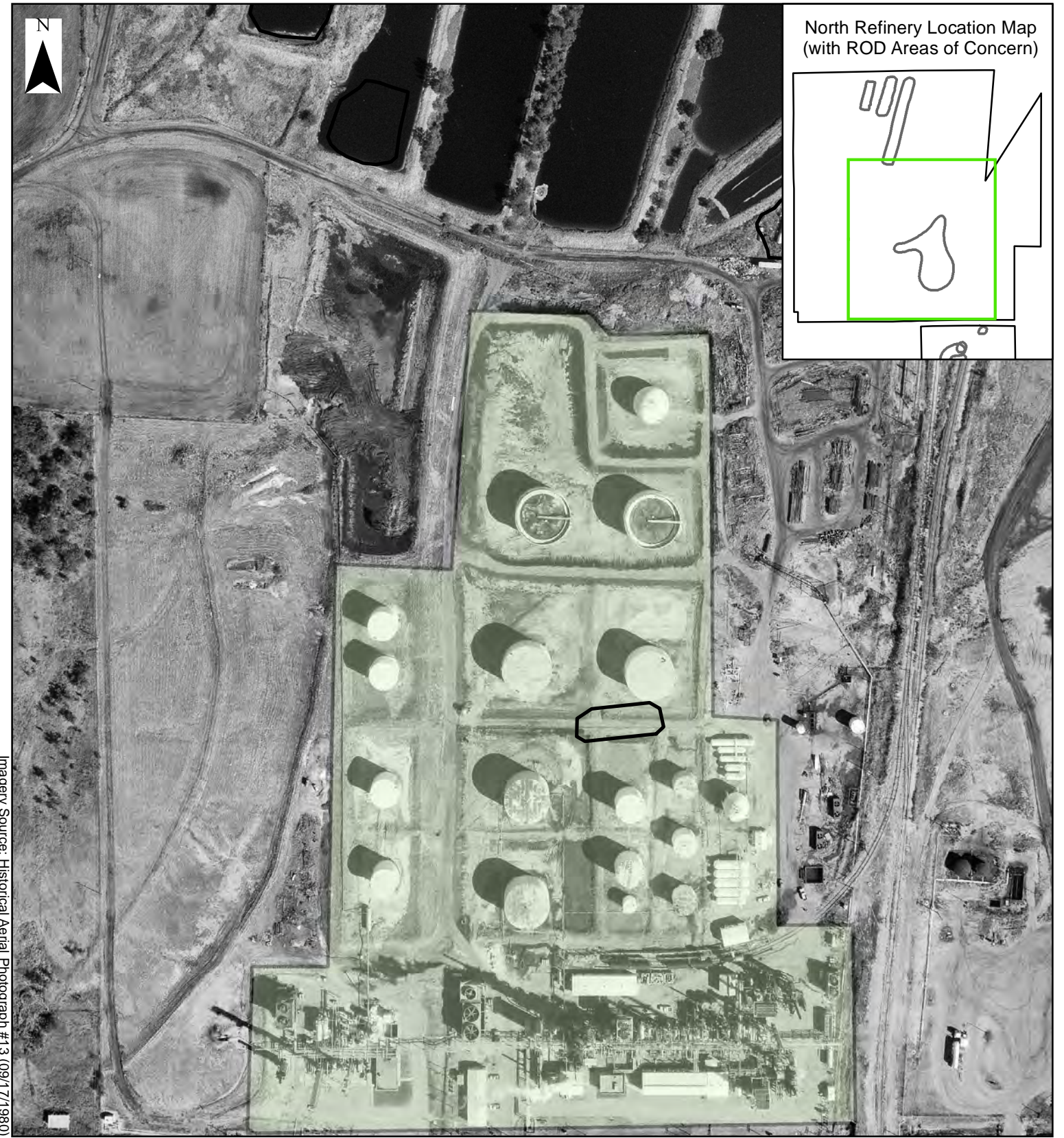
FIGURE
6



Imagery Source: Historical Aerial Photograph #13 (09/7/1980)

<div style="display: flex; align-items: center; margin-bottom: 5px;"> <div style="border: 1px solid black; width: 20px; height: 10px; margin-right: 5px;"></div> Areas addressed under the UAO </div> <div style="display: flex; align-items: center;"> <div style="background-color: #c8e6c9; width: 20px; height: 10px; margin-right: 5px;"></div> Process and Tankage Area </div>	<p>Base Aerial: 1980</p> <div style="display: flex; align-items: center; justify-content: center;"> 0 <div style="flex-grow: 1; border-bottom: 1px solid black; position: relative;"> <div style="position: absolute; right: -10px; top: -5px;">200</div> </div> Feet </div>
--	---

<p>South Refinery Processing and Tankage Area Footprint</p>	<p>FIGURE 7</p>
---	-----------------------------------

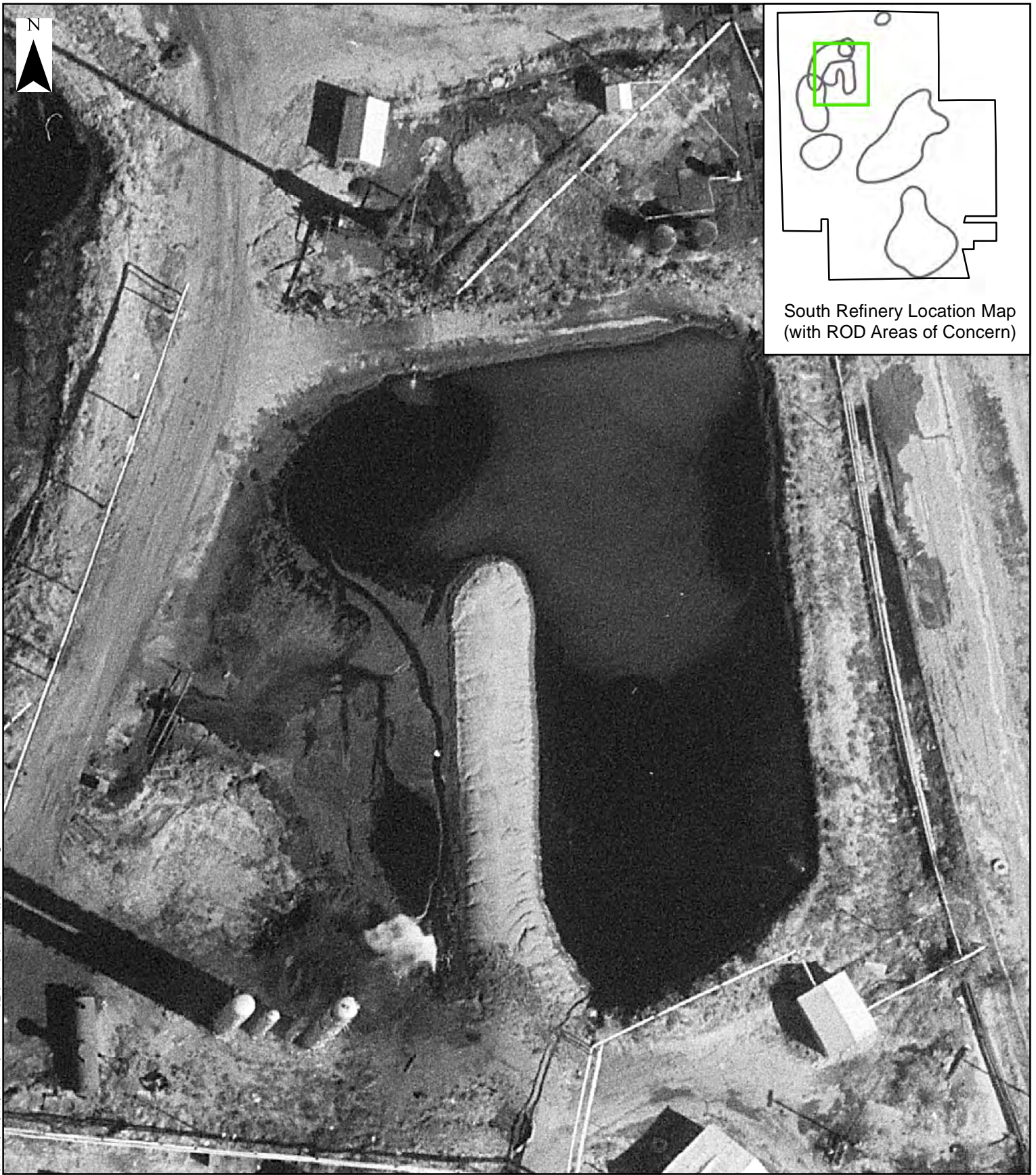


Imagery Source: Historical Aerial Photograph #13 (09/7/1980)

<div style="border: 1px solid black; width: 20px; height: 10px; display: inline-block;"></div>	Areas addressed under the UAO		Base Aerial: 1980
<div style="background-color: #c8e6c9; width: 20px; height: 10px; display: inline-block;"></div>	Process and Tankage Area	<div style="display: flex; align-items: center;"> <div style="width: 100px; border-bottom: 1px solid black; margin-right: 5px;"></div> <div style="display: flex; flex-direction: column; align-items: center; margin-right: 5px;"> <div style="width: 0; height: 0; border-left: 5px solid transparent; border-right: 5px solid transparent; border-bottom: 10px solid black;"></div> <div style="font-size: 8px; margin-top: 2px;">0</div> <div style="font-size: 8px; margin-top: 2px;">200</div> <div style="font-size: 8px; margin-top: 2px;">Feet</div> </div> </div>	

North Refinery Processing and Tankage Area Footprint

FIGURE 8



South Refinery Location Map
(with ROD Areas of Concern)

Imagery Source: Historical Aerial Photograph #13 (09/17/1980)

Base Aerial: 1980

0 40
Feet

Coke Pond

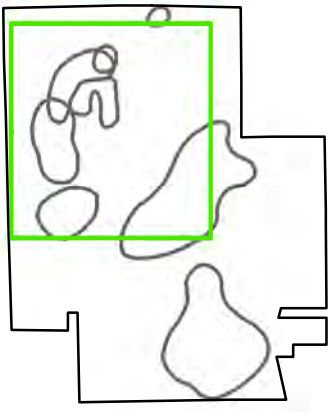
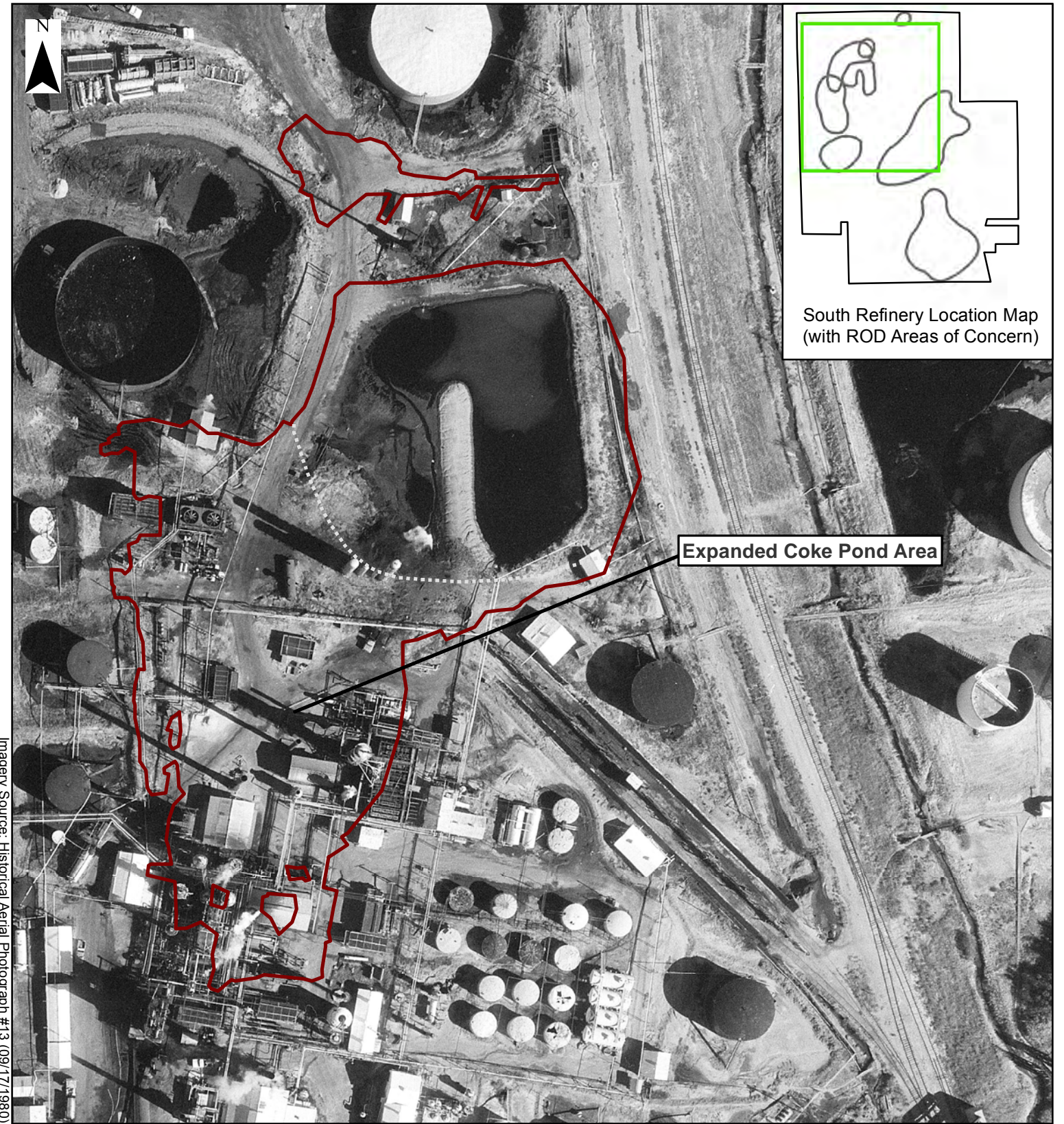
FIGURE

9



Photograph - Coke Fines Removed from Coke Pond

FIGURE
10



South Refinery Location Map
(with ROD Areas of Concern)

Expanded Coke Pond Area

Imagery Source: Historical Aerial Photograph #13 (09/17/1980)

Areas addressed under the UAO:

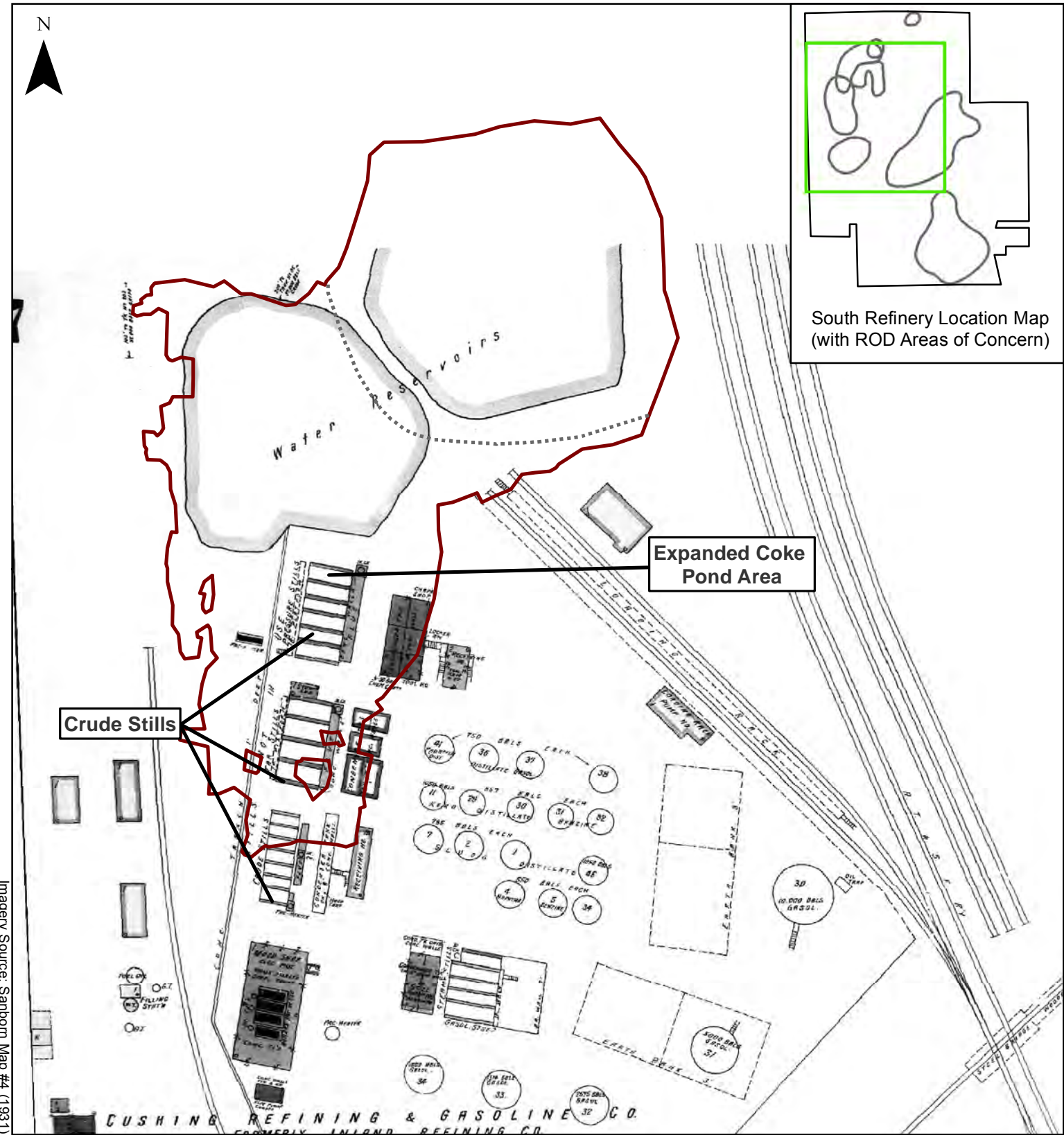
Soil Removal Excavated to Greater than 2 Feet for Visual Confirmation

Approximate Boundary between Coke Pond Excavation and Coke Pond Expansion


Base Aerial: 1980 0 200 Feet


Areas Addressed under the UAO for
“visual contamination” within the
Coke Pond Excavation, Coke Pond Expansion,
and SAOC 5-1


**FIGURE
11**



Areas addressed under the UAO:

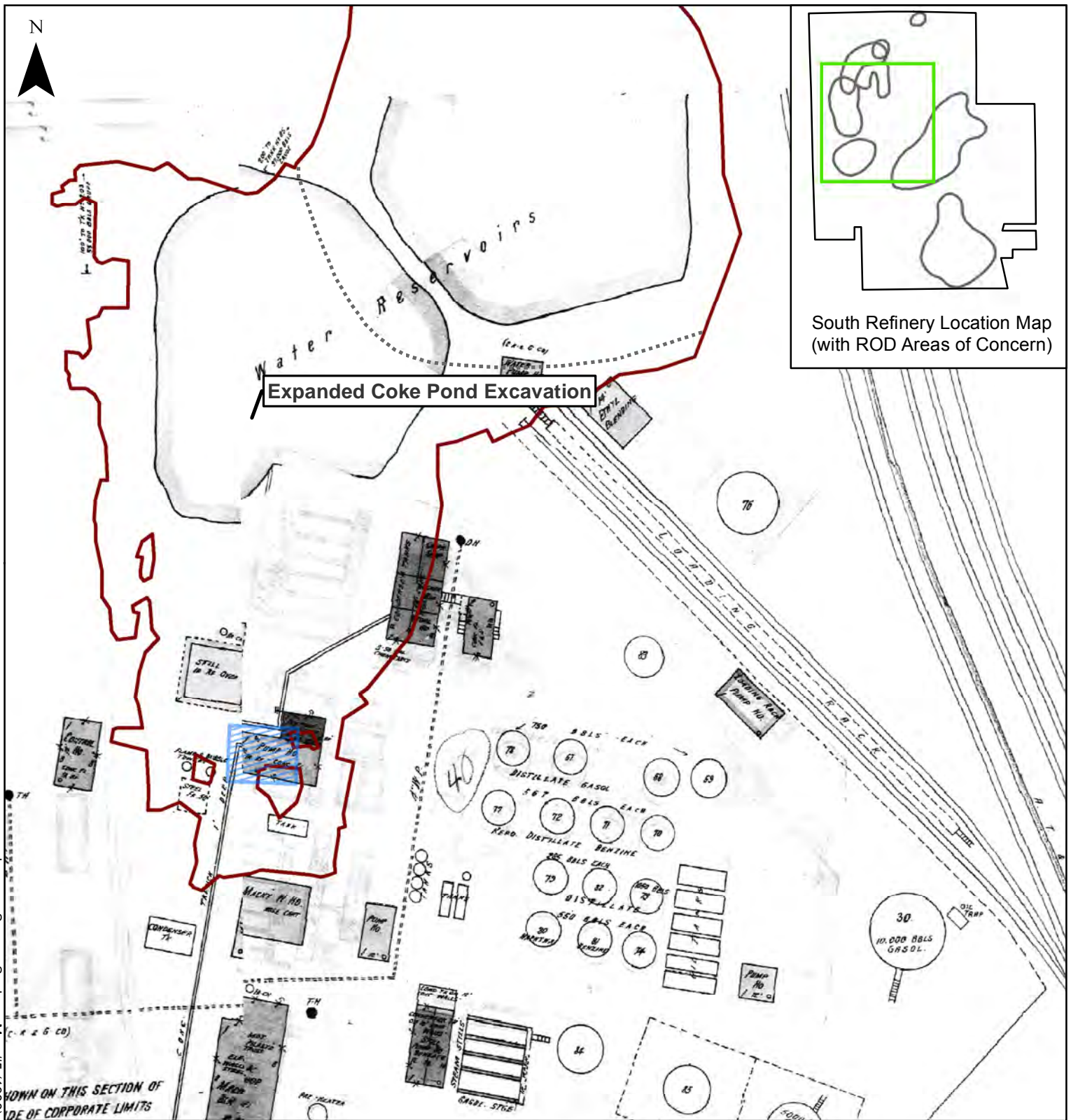
 Soil Removal Excavated to Greater than 2 Feet for Visual Confirmation

 Approximate Boundary between Coke Pond Excavation and Coke Pond Expansion

Sanborn Map: 1931  0 120 Feet

Areas Addressed under the UAO for “visual contamination” within the Coke Pond Excavation and the Coke Pond Expansion compared to historical refinery units in 1931

FIGURE 12



Imagery Source: Sanborn Map #5 (1938)

Areas addressed under the UAO:

Soil Removal Excavated to Greater than 2 Feet for Visual Confirmation

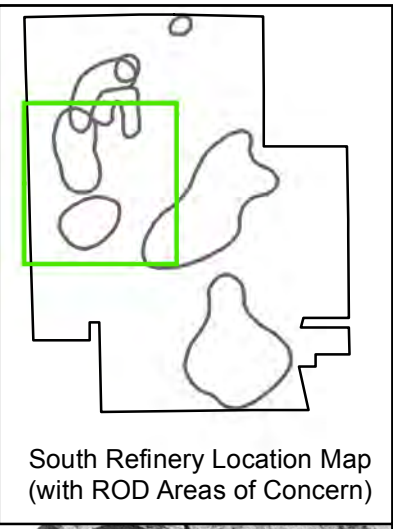
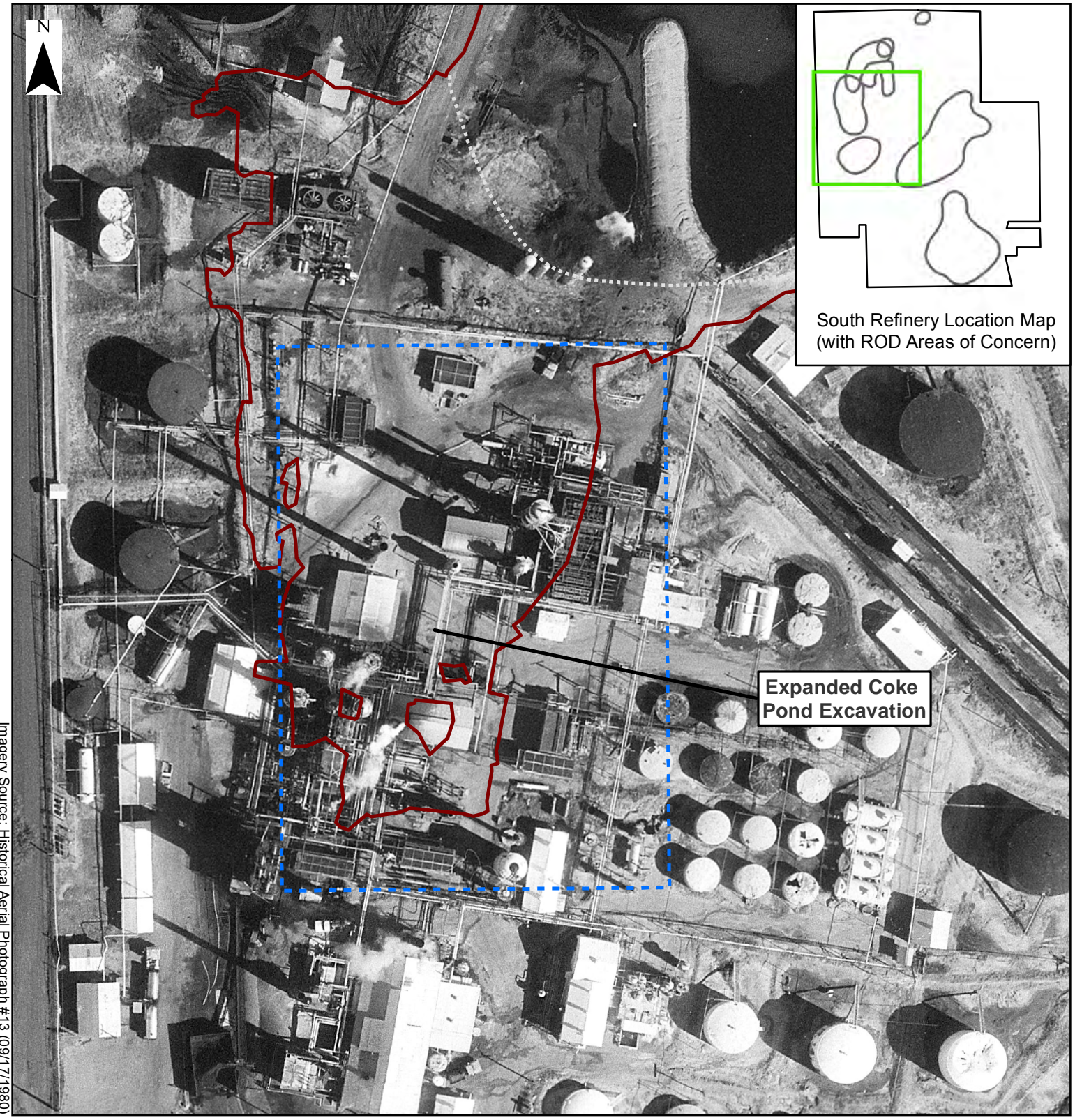
Crude Distillation Column

Approximate Boundary between Coke Pond Excavation and Coke Pond Expansion

Sanborn Map: 1938 0 120 Feet

Areas Addressed under the UAO for "visual contamination" within the Coke Pond Excavation and the Coke Pond Expansion compared to historical refinery units in 1938

FIGURE 13



South Refinery Location Map (with ROD Areas of Concern)

Expanded Coke Pond Excavation

Imagery Source: Historical Aerial Photograph #13 (09/17/1980)

Areas addressed under the UAO:	
Soil Removal Excavated to Greater than 2 Feet for Visual Confirmation	South Refinery Processing Area
	Approximate Boundary between Coke Pond Excavation and Coke Pond Expansion
	Base Aerial: 1980 0 120 Feet

Areas Addressed under the UAO for “visual contamination” within the Coke Pond Excavation and the Coke Pond Expansion

FIGURE 14



Photograph - Leaking Buried Pipe under Former Crude Stills

FIGURE
15



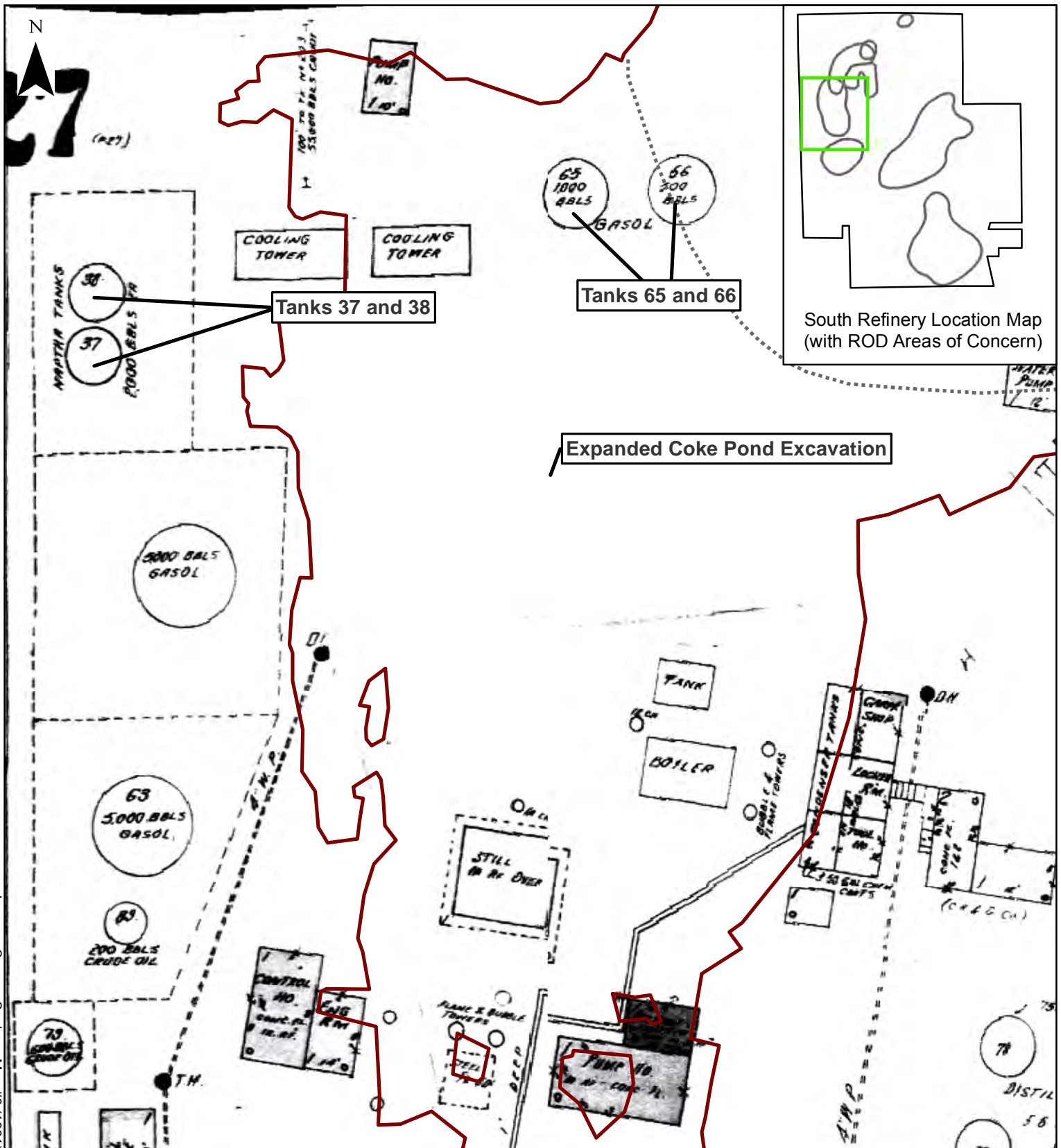
Photograph - "Visual contamination" from "Rats Nest" of
Leaking Buried Piping under Former Crude Stills

FIGURE
16



Photograph - "Visual contamination" from
Leaking pre WWII Threaded Pipe "T"

FIGURE
17



Imagery Source: Sanborn Map #6 (1961)

<p>Areas addressed under the UAO:</p> <p> Soil Removal Excavated to Greater than 2 Feet for Visual Confirmation</p>	<p>..... Approximate Boundary between Coke Pond Excavation and Coke Pond Expansion</p> <p>0 80 Feet</p> <p>Sanborn Map: 1961</p>
--	--

Areas Addressed under the UAO for “visual contamination” within the Coke Pond Excavation and the Coke Pond Expansion

FIGURE 18



Photograph - Buried North/South Pipe-way under East Berm of Coke Pond

FIGURE
19



Photograph - Buried Pipe Dug up from Around Coke Pond Expansion Area

FIGURE
20